

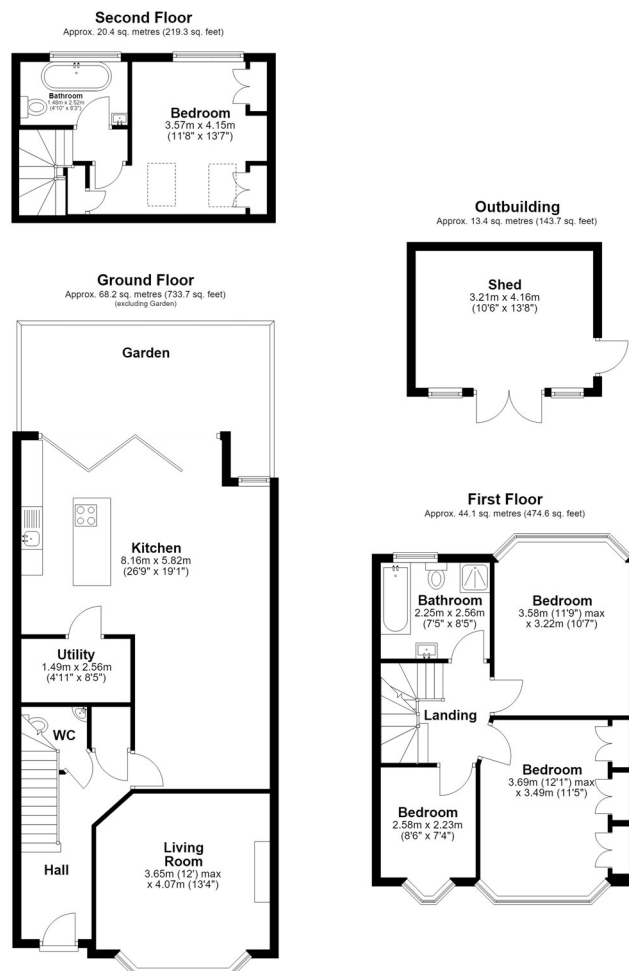


## Park Road, Aldersbrook

Asking Price £1,100,000 Freehold

- Four bedroom family home
- Stunning presentation and fitted storage throughout
- Large, family kitchen/dining/living area to the rear
- Ground floor W.C and generous coat cupboard
- Moments from Wanstead Park & the Wanstead Flats
- En-suite to principal bedroom
- Landscaped rear 90ft garden with summer house
- Separate utility room
- Off road parking
- Under a mile from the Elizabeth Line

*Petty Son & Prestwich are delighted to offer this wonderful four bedroom, two bathroom family home with beautiful garden and off road parking.*



Total area: approx. 146.0 sq. metres (1571.4 sq. feet)

This floor plan has been created by a third party and should be used as a general outline for guidance only. Any areas, measurements or distances quoted are approximate and any intending purchaser or lessee should satisfy themselves by inspection, searches, enquiries and/or full survey as to the correctness of each statement. We accept no responsibility or liability for any loss whatsoever that may arise as a result of this plan and the information contained within.

© @moderphoto.co.uk | www.moderphoto.co.uk  
Plan produced using PlanUp.

Park Road